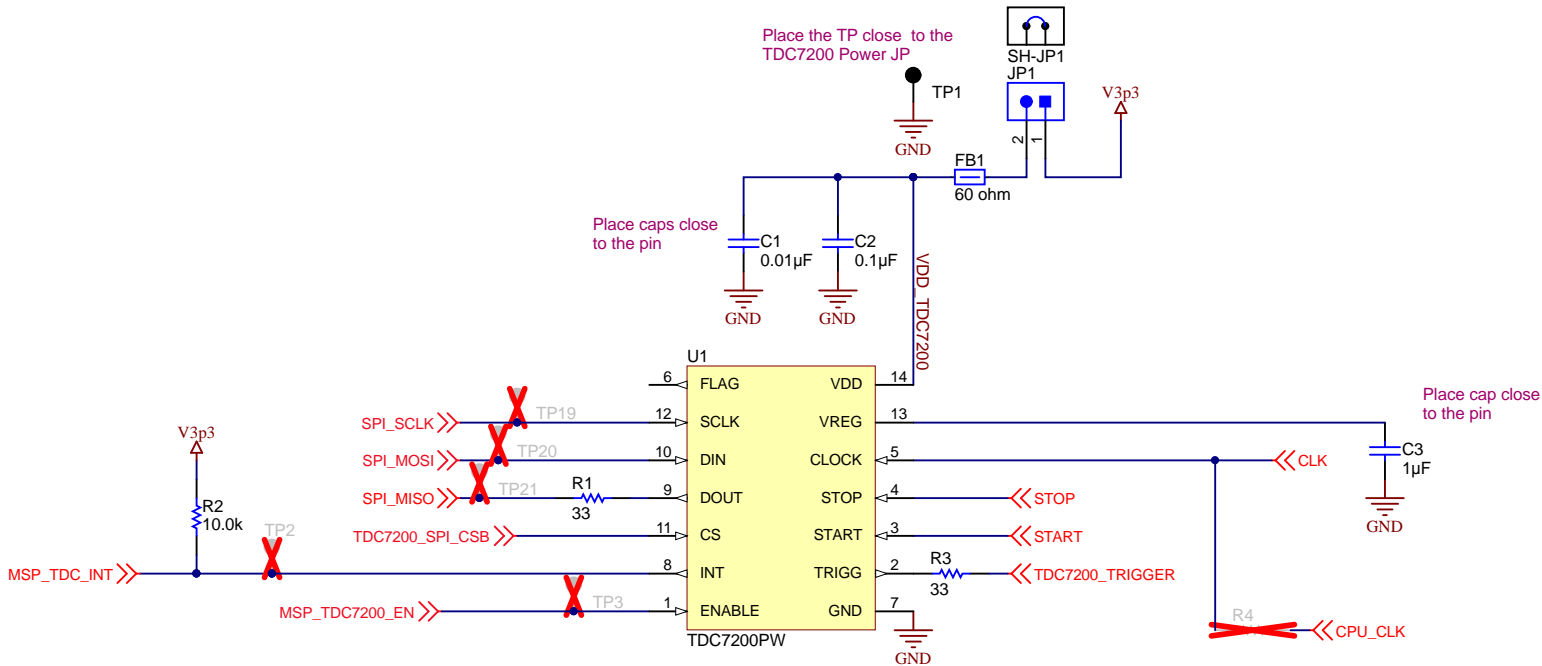
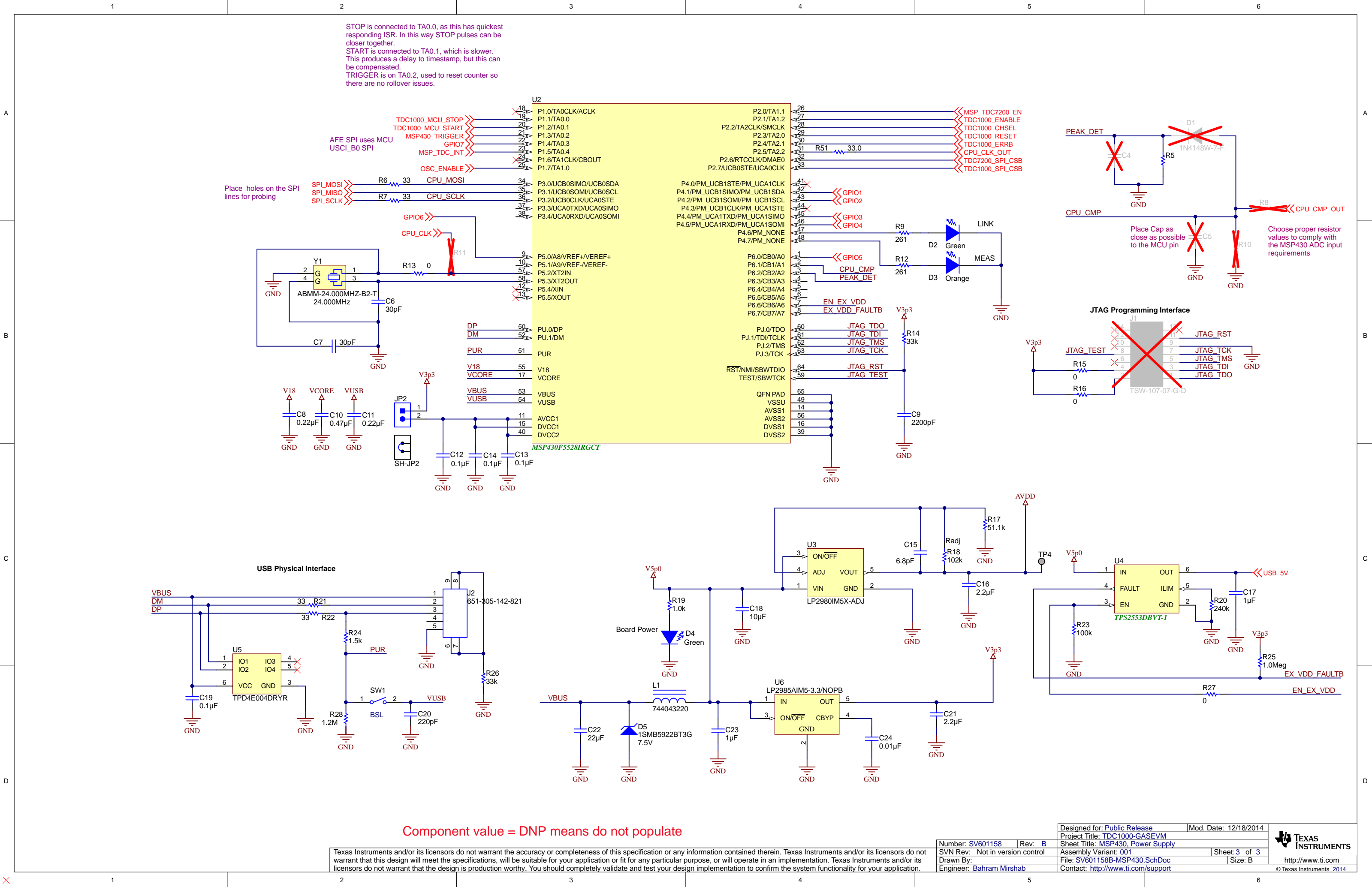


Texas Instruments and/or its licensors do not warrant the accuracy or completeness of this specification or any information contained therein. Texas Instruments and/or its licensors do not warrant that this design will meet the specifications, will be suitable for your application or fit for any particular purpose, or will operate in an implementation. Texas Instruments and/or its licensors do not warrant that the design is production worthy. You should completely validate and test your design implementation to confirm the system functionality for your application.



Component value = DNP means do not populate

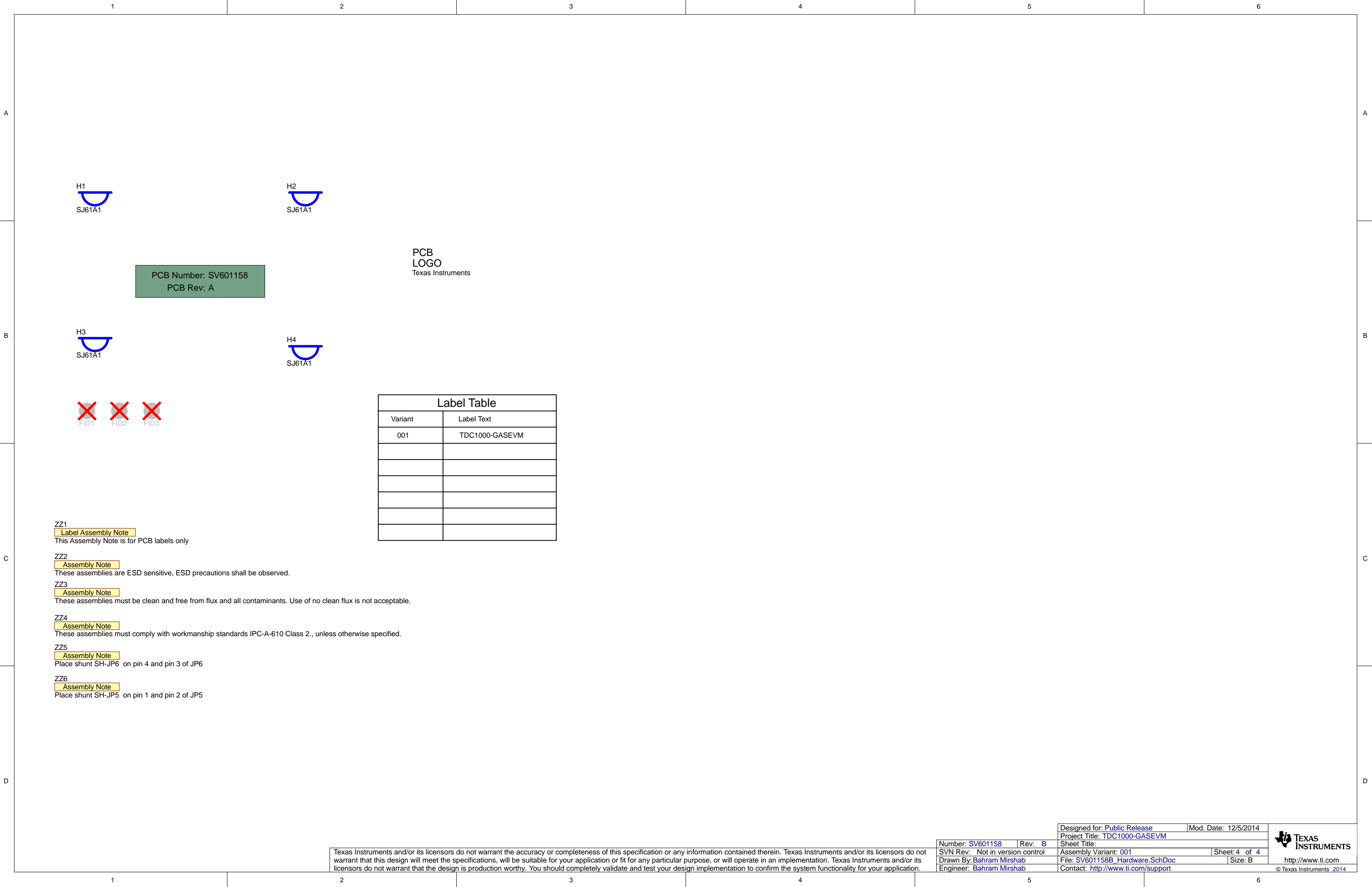




Component value = DNP means do not populate

Texas Instruments and/or its licensors do not warrant the accuracy or completeness of this specification or any information contained therein. Texas Instruments and/or its licensors do not warrant that this design will meet the specifications, will be suitable for your application or fit for any particular purpose, or will operate in an implementation. Texas Instruments and/or its licensors do not warrant that the design is production worthy. You should completely validate and test your design implementation to confirm the system functionality for your application.

Number: SV601158	Rev: B	Designed for: Public Release	Mod. Date: 12/18/2014
SVN Rev: Not in version control		Project Title: TDC1000-GASEVM	
Drawn By:		Sheet Title: MSP430_Power Supply	
Engineer: Bahram Mirshab		Assembly Variant: 001	Sheet: 3 of 3
		File: SV601158B-MSP430.SchDoc	Size: B
		Contact: http://www.ti.com/support	http://www.ti.com
			© Texas Instruments 2014



1

2

3

4

5

6

A

B

C

D

1

2

3

4

5

6

A

B

C

D

